

HT75 SERIES CASTOR

本體及煞車踏板採用Nylon加上特殊配方，腳架旋轉頸部及輪子採用精密軸承。搭配TPU輪子。
Glass fiber reinforced Nylon 6 for body and brake pedals, precision ball bearings swivel head and wheel axles. Non-marking, elastic thermoplastic polyurethane treads.

P 方盤結構 Top Plate Fitting



Total locking

Catis code	mm	mm	mm	Fitting	mm	mm	mm	kg	Shore A	kg	
HT75BP2/G	75	12	62		P2	23	93	89	50.0	85±5	0.41

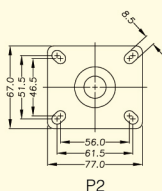
Free swivel

Catis code	mm	mm	mm	Fitting	mm	mm	mm	kg	Shore A	kg	
HT75P2/G	75	12	62		P2	23	93	68	50.0	85±5	0.39

輪胎硬度 Durometer of tire

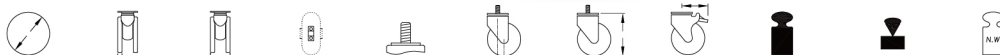
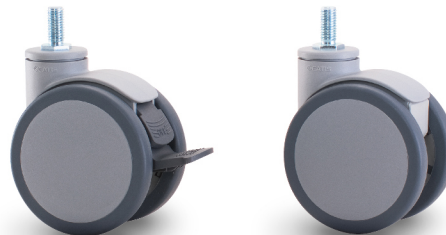
荷重 根據EN12526 -EN12533規範，
定義每顆腳輪荷重(公斤)
Load Capacity as determined per EN12526 to EN12533,
Load Capacity / Per Castors (kgs)

精密軸承 Precision ball bearing



另外有導電輪可供選擇。
Conductive wheels are also available
另外有不鏽鋼腳輪可供選擇。
Stainless steel castors are also available.

T 螺牙式結構 Threaded Stem Fitting with Hex Base Washer



Total locking

Catis code	mm	mm	mm	Fitting	mm	mm	mm	kg	Shore A	kg	
HT75BT2/G	75	12	62		T2	23	93	89	50.0	85±5	0.33
HT75BT3/G	75	12	62		T3	23	93	89	50.0	85±5	0.33
HT75BT4/G	75	12	62		T4	23	93	89	50.0	85±5	0.33

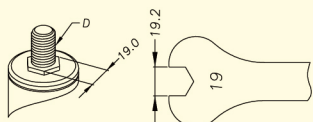
Free swivel

Catis code	mm	mm	mm	Fitting	mm	mm	mm	kg	Shore A	kg	
HT75T2/G	75	12	62		T2	23	93	68	50.0	85±5	0.31
HT75T3/G	75	12	62		T3	23	93	68	50.0	85±5	0.31
HT75T4/G	75	12	62		T4	23	93	68	50.0	85±5	0.31

輪胎硬度 Durometer of tire

荷重 根據EN12526 -EN12533規範，定義每顆腳輪荷重(公斤)
Load Capacity as determined per EN12526 to EN12533, Load Capacity / Per Castors (kgs)

精密軸承 Precision ball bearing



Code Dimension

T2	1/2-13UNC×1"
T3	M10×25mm P=1.5
T4	M12×25mm P=1.75



另外有導電輪可供選擇。
Conductive wheels are also available
另外有不鏽鋼腳輪可供選擇。
Stainless steel castors are also available.