

## CT SERIES CASTOR

A brand new central locking castor  
125 & 150mm



# Low Profile Castor

以  
致  
人  
士

While hospital bed is designed for the comfort of the patients, its height is equally important for patient to get on and off the bed; and in no small part, it should be high enough for medical staffs to treat patient without sustaining back injury to themselves. Yet, none of these designs would make sense if the bed cannot be moved smoothly, let alone stayed locked in place when required. With these in mind, Catis new CT central lock castors are redesigned from ground up, and with a low overall height of several millimeters above the wheels, they are unpaired in steadiness whether they are rolling or parked.

For easy handling, the CT comes with two bearings on the stem for smooth swiveling, while two precision ball bearings in the wheel axles take care of the rolling motion. Supplemented with highly elastic PU mounted on a wheel center made of Nylon 6 reinforced with glass fiber, the wheel is light and sturdy. If a quiet flow is your want, this combination shall suffice.

Covering all the functional parts, tough ABS is used. Though beauty lies in the eyes of the beholder, the clean suave line of CT holds its attitude as an icon for contemporary esthetics. For stock, the CT castor comes in white (RAL 9010), whereas we are capable to offer a range of color scheme too.

To the comfort of most hospital bed and medical equipment manufacturers, their central locking vehicles now have a range of stem options to choose from at Catis. Last but not least, all materials used in CT are environmental friendly, all recyclable, and meet ROHS standards.

So, for a one-stop shopping, call us to find out at +886-2-88095011 or e-mail us at [service@catis.com.tw](mailto:service@catis.com.tw).

Looking For Better Solutions.





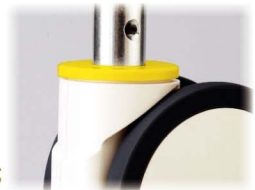


# Specification

## Ø28.0mm x 45°



Pressed steel body and ABS cover (white color RAL 9010),  
Non-marking PU tread, Nylon wheel center.  
Wheel axle: Precision ball bearing.  
Swivel head: Precision ball bearing & Thrust ball bearing



Conductive wheels are also available;  
add "-AS" suffix to Catis Code, e.g. CT571R9/W517U-AS

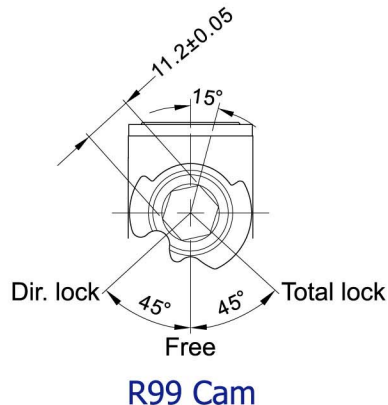
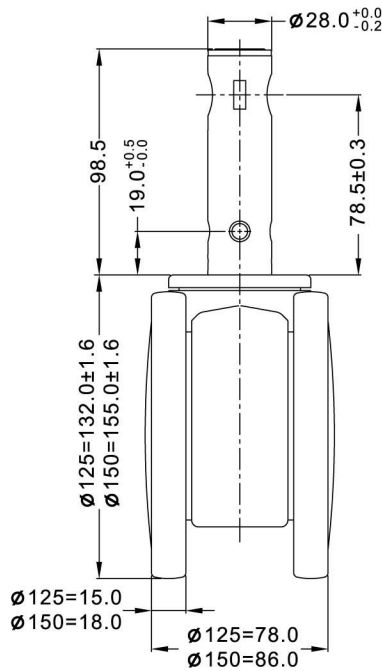
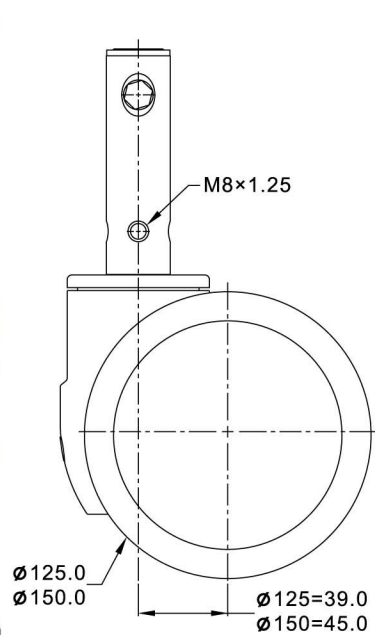


| mm  | mm   |  | Fitting | kg  | Shore A | Catis code     | Brake type                    |
|-----|------|--|---------|-----|---------|----------------|-------------------------------|
| 125 | 15x2 |  | R99     | 120 | 95±5    | CT570R99/W517U | Total lock / Free / Dir. lock |
| 150 | 18x2 |  | R99     | 150 | 95±5    | CT670R99/W617U | Total lock / Free / Dir. lock |
| 125 | 15x2 |  | R99     | 120 | 95±5    | CT572R99/W517U | Total lock / Free             |
| 150 | 18x2 |  | R99     | 150 | 95±5    | CT672R99/W617U | Total lock / Free             |
| 125 | 15x2 |  | R9      | 120 | 95±5    | CT571R9/W517U  | Free swivel                   |
| 150 | 18x2 |  | R9      | 150 | 95±5    | CT671R9/W617U  | Free swivel                   |

Precision ball bearing

Load Capacity as determined per EN12531; Load Capacity/Castor (kgs)

Durometer of tire





# Specification

Ø32.0mm x 30°

Pressed steel body and ABS cover (white color RAL 9010)

Non-marking PU tread, Nylon wheel center.










Wheel axle: Precision ball bearing.

Swivel head: Precision ball bearing & Thrust ball bearing



Conductive wheels are also available;  
add "-AS" suffix to Catis Code, e.g. CT571R69/W517U-AS

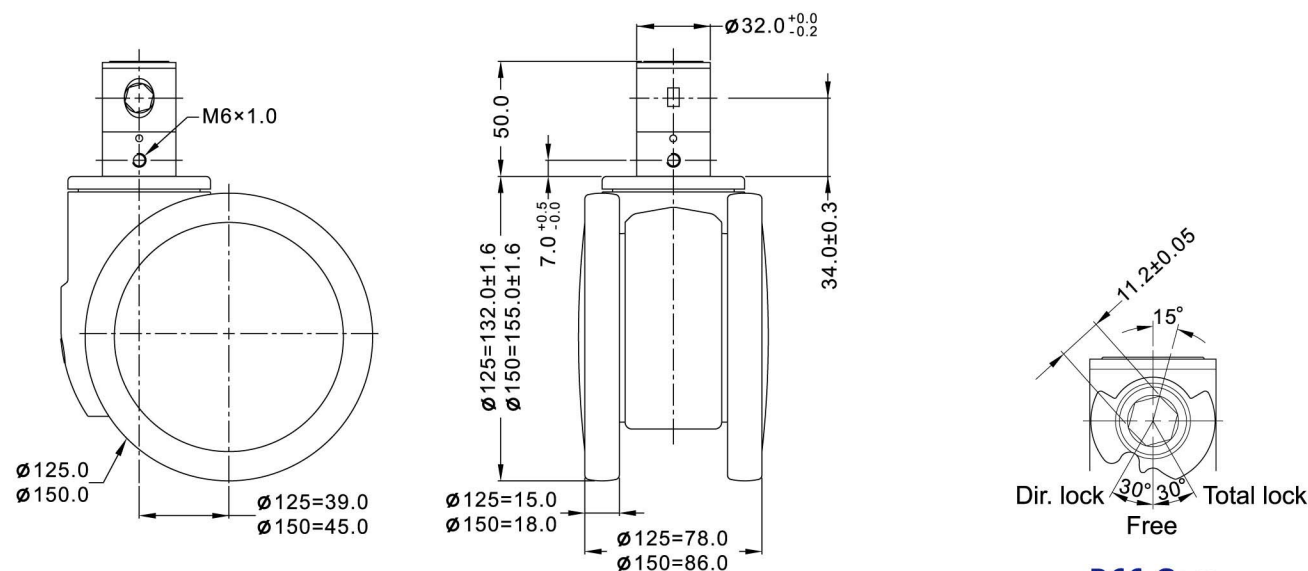


| mm  | mm   |   | Fitting | kg  | Shore A | Catis code     | Brake type  |
|-----|------|---|---------|-----|---------|----------------|---|
| 125 | 15x2 |  | R66     | 120 | 95±5    | CT570R66/W517U |  Total lock / Free / Dir. lock |
| 150 | 18x2 |  | R66     | 150 | 95±5    | CT670R66/W617U |   |
| 125 | 15x2 |  | R66     | 120 | 95±5    | CT572R66/W517U |  Total lock / Free             |
| 150 | 18x2 |  | R66     | 150 | 95±5    | CT672R66/W617U |   |
| 125 | 15x2 |  | R69     | 120 | 95±5    | CT571R69/W517U |  Free swivel                   |
| 150 | 18x2 |  | R69     | 150 | 95±5    | CT671R69/W617U |   |

●● Precision ball bearing

Load Capacity as determined per EN12531; Load Capacity/Castor (kgs)

Durometer of tire

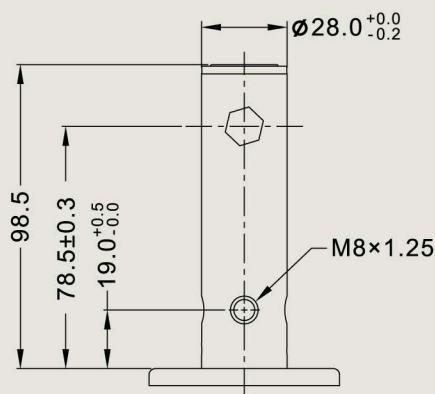


R66 Cam

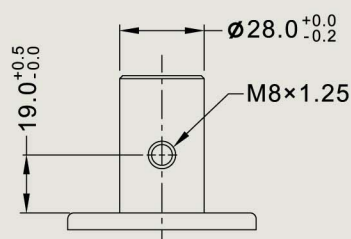
# Mounting Fitting

## Standard

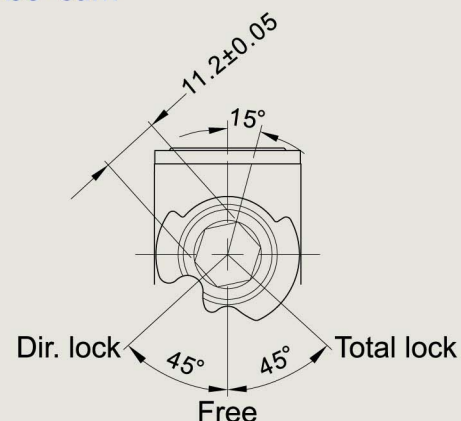
R99



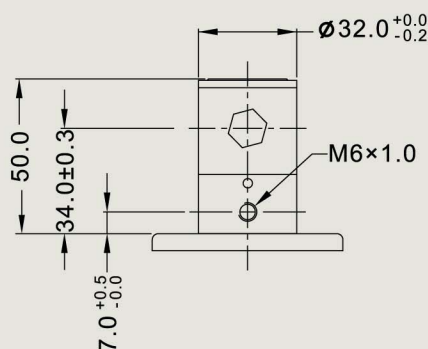
R9 Free Swivel



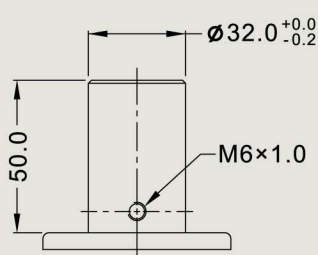
R99 Cam



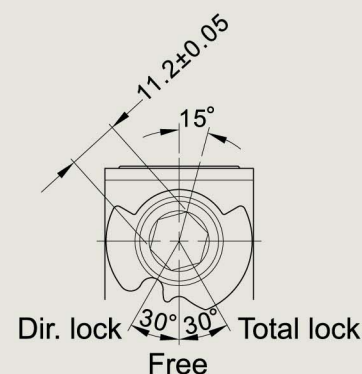
R66



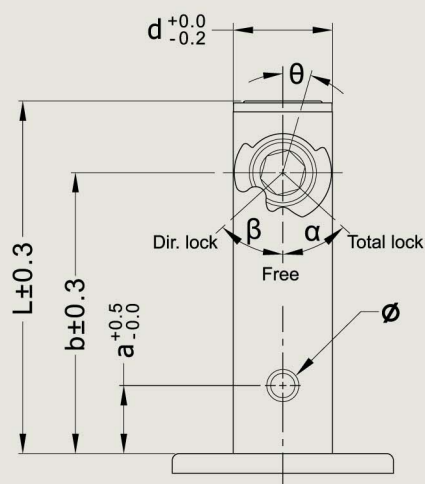
R69 Free Swivel



R66 Cam



## Options



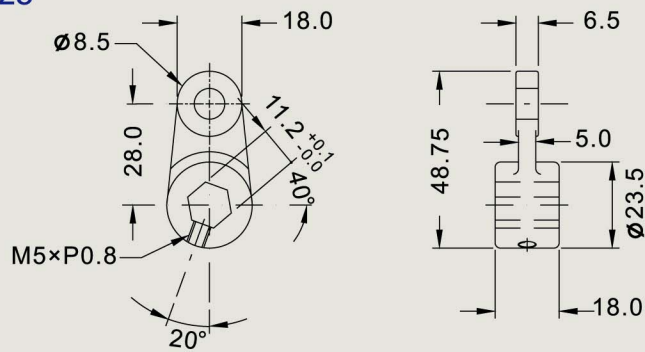
| Code           | R99       | R99a      | R95       | R95b      | R97       |
|----------------|-----------|-----------|-----------|-----------|-----------|
| $\theta$       | 15°       | 0°        | 15°       | 20°       | 15°       |
| $\alpha/\beta$ | 45°/45°   | 30°/30°   | 45°/45°   | 30°/30°   | 52°/41°   |
| d              | 28.0      | 28.0      | 28.0      | 28.0      | 28.4      |
| L              | 98.5      | 98.5      | 92.5      | 92.5      | 92.5      |
| b              | 78.5      | 78.5      | 71.5      | 71.5      | 71.5      |
| a              | 19.0      | 19.0      | 19.0      | 19.0      | 19.0      |
| $\emptyset$    | M8 x 1.25 | M8 x 1.25 | M8 x 1.25 | M8 x 1.25 | M8 x 1.25 |

| Code           | R66      | R66a     |
|----------------|----------|----------|
| $\theta$       | 15°      | 0°       |
| $\alpha/\beta$ | 30°/30°  | 30°/30°  |
| d              | 32.0     | 32.0     |
| L              | 50.0     | 50.0     |
| b              | 34.0     | 34.0     |
| a              | 7.0      | 7.0      |
| $\emptyset$    | M6 x 1.0 | M6 x 1.0 |

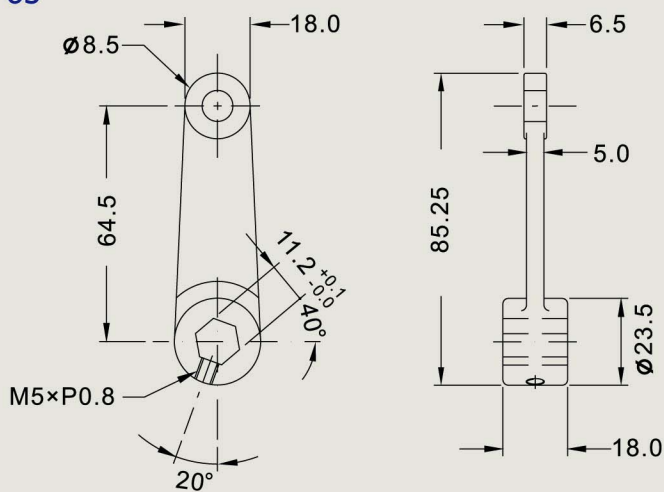
# Accessories

## Change lever

CV-28

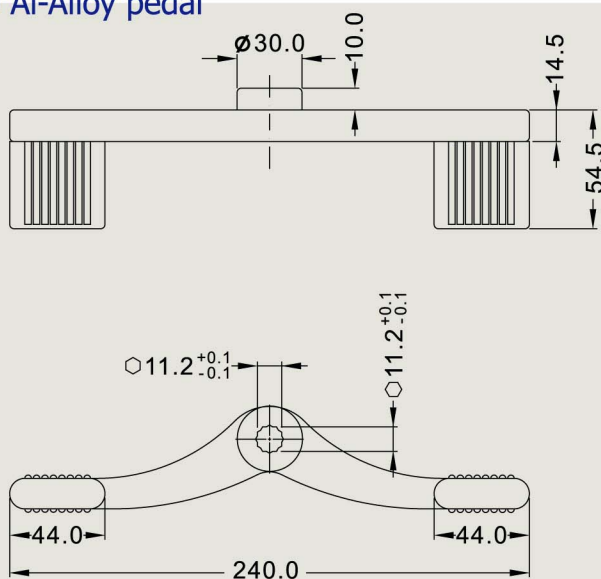


CV-65



## Double Lever Pedal

PD-230 Al-Alloy pedal



PD-230-L

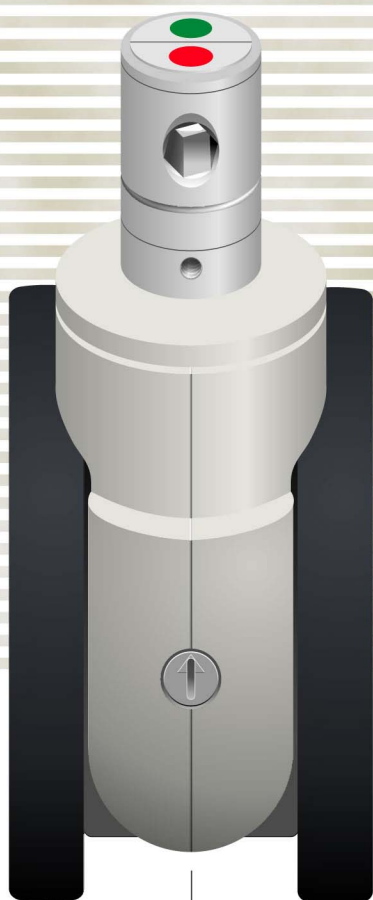


PD-230-R



# Fine Adjustment for Wheel Lock

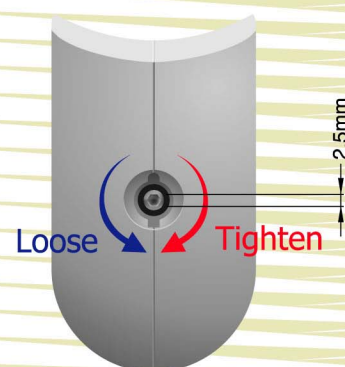
Unlock and remove cap to access the adjustment screw for fine tuning the brake tightness



Lock



Unlock



Adjustment screw