

HT SERIES CASTOR

Better Solution...hi-performance yet cost less



Advances in digital technology revolutionize electronic equipment by the dozens with nothing less pronounced as the ultrasound diagnostic machines. Once these behemoths weighing in like sumo wrestlers rule the clinic and hospital floors are gradually replaced by trim down versions requiring less and less effort to move around. Castors previously designed to shift them to and fro now seem relatively dated and oversized. Realizing this, Catis spare no time to put new designs on the drawing board; sketches upon sketches, the HT was born. ❶

In essential, the HT is a descendent of twin-wheel series of TT castor ❷ which has stopped the world with its Trident Total Lock System and highly preferred on various mobile medical units. Remains unmatched in its reliability, this locking mechanism is faithfully passed on to HT.

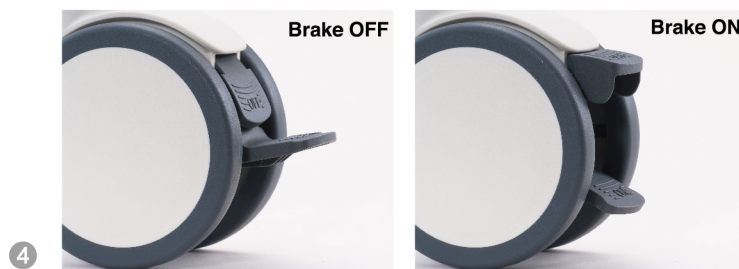


Standing alone, HT is easily mistaken as its forebear. However, when stood side by side of each other, their overall size is obvious. Although HT is less massive, there is no compromise as far as its performance and property is concerned. Plainly speaking, it is a light weight, elegant tractor that fits the bill. ❸

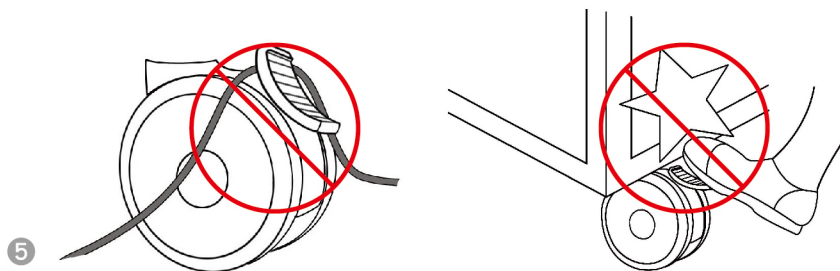


Other than cosmetic variations, additional engineering twist allows HT to outperform its predecessor.

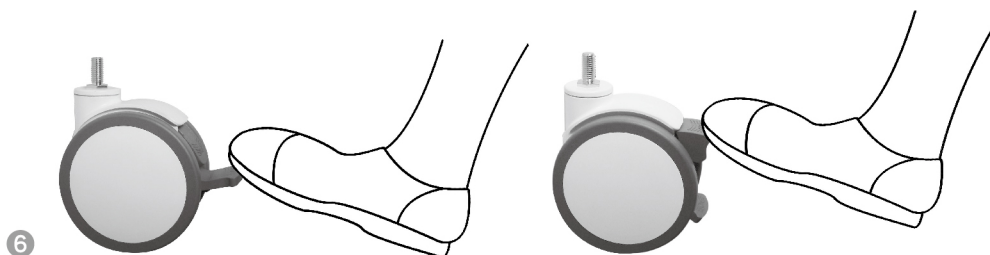
Foremost is the braking element. While locking mechanism is basically identical to TT, the components are redesigned to function at a lighter application force. A gentle tap is all it takes to activate the system; ON/OFF, each completed with a pleasant thud. ④



Castors of yesterdays are often complained about marring up shoe tips and the annoyance of having wire trapped between stiff pedals. With HT, these are history. ⑤



The lock pedals (ON/OFF) are surgically re-designed to keep wires and cables away at brake application, meanwhile allowing ample room to accommodate the tapping shoe. ⑥

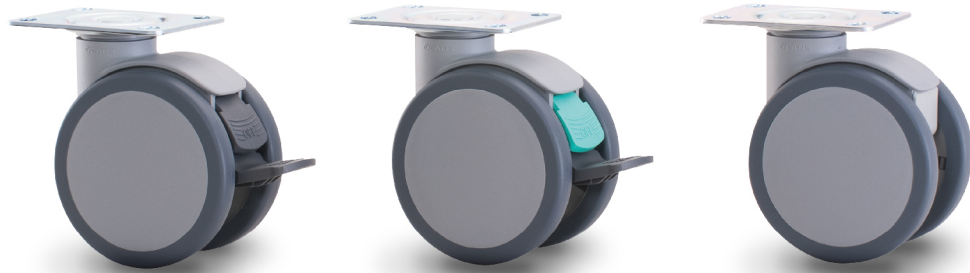


Suffice it to say, available with a range of mounting fitting, locking options and tread properties, all one needs is a choice of color, as stock it is either grey or white (color customization available pending on quantity order).

With all these merits in situ, one may easily jump to conclusion that this new breed must cost dearly. Wait... It is more affordable than ever. Contact us to find out at [**service@catis.com.tw**](mailto:service@catis.com.tw)

For specifications, see following pages.

SPECIFICATION



P Top Plate Fitting

Glass fiber reinforced Nylon 6 for body and brake pedals. Precision ball bearings at swivel head and wheel axle. Non-marking, elastic thermoplastic polyurethane treads.



Total locking

Catis code	mm	mm	mm		Fitting	mm	mm	mm	kg	Shore A	kg
HT100BP1/G	100	14	67	●●	P1	30	126	108	80.0	85±5	0.62
HT100BP2/G	100	14	67	●●	P2	30	122	108	80.0	85±5	0.62
HT125BP1/G	125	15	73	●●	P1	38	149	133	100.0	85±5	0.77
HT125BP2/G	125	15	73	●●	P2	38	145	133	100.0	85±5	0.77

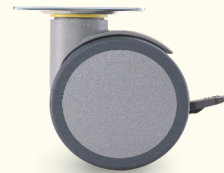
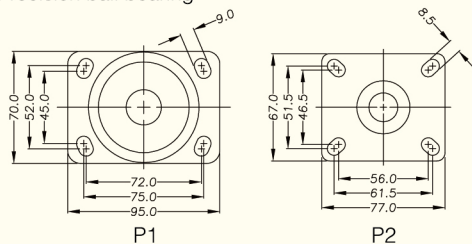
Directional locking

Catis code	mm	mm	mm		Fitting	mm	mm	mm	kg	Shore A	kg
HT100D1P1/G	100	14	67	●●	P1	30	126	108	80.0	85±5	0.62
HT100D1P2/G	100	14	67	●●	P2	30	122	108	80.0	85±5	0.62
HT125D1P1/G	125	15	73	●●	P1	38	149	133	100.0	85±5	0.77
HT125D1P2/G	125	15	73	●●	P2	38	145	133	100.0	85±5	0.77

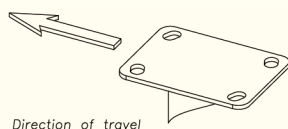
Free swivel

Catis code	mm	mm	mm		Fitting	mm	mm	mm	kg	Shore A	kg
HT100P1/G	100	14	67	●●	P1	30	126	86	80.0	85±5	0.57
HT100P2/G	100	14	67	●●	P2	30	122	86	80.0	85±5	0.57
HT125P1/G	125	15	73	●●	P1	38	149	106	100.0	85±5	0.68
HT125P2/G	125	15	73	●●	P2	38	145	106	100.0	85±5	0.68

- Durometer of tire
- Load Capacity as determined per EN12526 to EN12533, Load Capacity / Per Castor (kg)
- Precision ball bearing

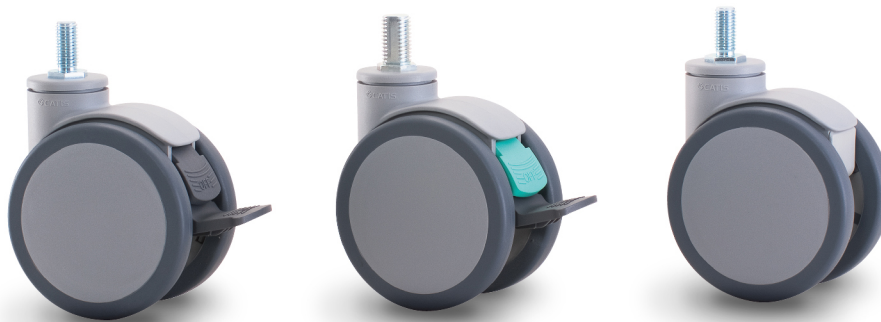


- Conductive wheels are also available. Add "-KAS" suffix to Catis code, e.g. HT100BP1/G-KAS
- Stainless steel castors are also available. Add "-SS" suffix to Catis code, e.g. HTE100BP1SS/G



Directional Locking Castor

Unless requested otherwise, directional locking castor with top plate fitting should be installed with the longer length parallel to the direction of travel.



T Threaded Stem Fitting

Glass fiber reinforced Nylon 6 for body and brake pedals. Precision ball bearings at swivel head and wheel axle. Non-marking, elastic thermoplastic polyurethane treads.



Total locking

Catis code	mm	mm	mm		Fitting	mm	mm	mm	kg	Shore A	kg
HT100BT2/G	100	14	67	●●	T2	30	122	108	80.0	85±5	0.51
HT100BT3/G	100	14	67	●●	T3	30	122	108	80.0	85±5	0.51
HT100BT4/G	100	14	67	●●	T4	30	122	108	80.0	85±5	0.51
HT100BT5/G	100	14	67	●●	T5	30	122	108	80.0	85±5	0.51
HT125BT2/G	125	15	73	●●	T2	38	145	133	100.0	85±5	0.69
HT125BT3/G	125	15	73	●●	T3	38	145	133	100.0	85±5	0.69
HT125BT4/G	125	15	73	●●	T4	38	145	133	100.0	85±5	0.69
HT125BT5/G	125	15	73	●●	T5	38	145	133	100.0	85±5	0.69

Directional locking

Catis code	mm	mm	mm		Fitting	mm	mm	mm	kg	Shore A	kg
HT100D1T55/G	100	14	67	●●	T55	30	122	108	80.0	85±5	0.51
HT125D1T55/G	125	15	73	●●	T55	38	145	133	100.0	85±5	0.69

Free swivel

Catis code	mm	mm	mm		Fitting	mm	mm	mm	kg	Shore A	kg
HT100T2/G	100	14	67	●●	T2	30	122	86	80.0	85±5	0.45
HT100T3/G	100	14	67	●●	T3	30	122	86	80.0	85±5	0.45
HT100T4/G	100	14	67	●●	T4	30	122	86	80.0	85±5	0.45
HT100T5/G	100	14	67	●●	T5	30	122	86	80.0	85±5	0.45
HT125T2/G	125	15	73	●●	T2	38	145	106	100.0	85±5	0.60
HT125T3/G	125	15	73	●●	T3	38	145	106	100.0	85±5	0.60
HT125T4/G	125	15	73	●●	T4	38	145	106	100.0	85±5	0.60
HT125T5/G	125	15	73	●●	T5	38	145	106	100.0	85±5	0.60

👤 Durometer of tire

👤 Load Capacity as determined per EN12526 to EN12533, Load Capacity / Per Castor (kg)

●● Precision ball bearing

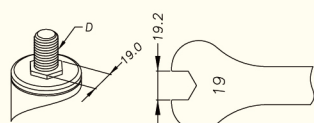
Code Dimension

T2 1/2-13UNC×1

T3 M10×25mm P=1.5

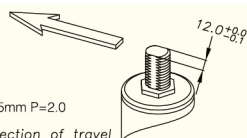
T4 M12×25mm P=1.75

T5 M16×25mm P=2.0



Conductive wheels are also available. Add "-KAS" suffix to Catis code, e.g. HT100BT4/G-KAS

Stainless steel castors are also available. Add "-SS" suffix to Catis code, e.g. HTE100BT4SS/G



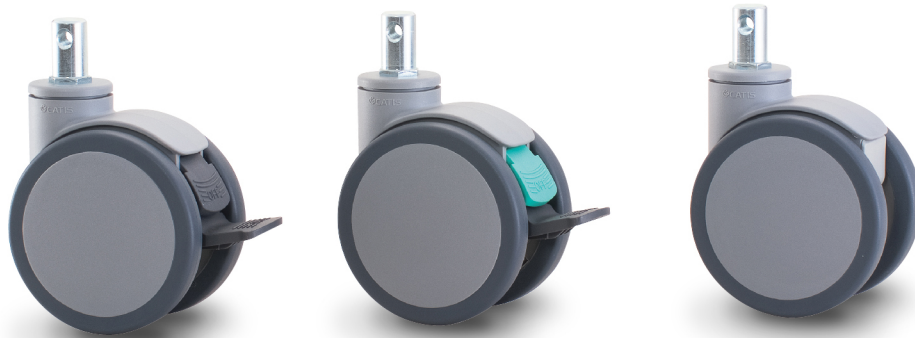
T55
M16×25mm P=2.0

Direction of travel

Directional Locking Castor

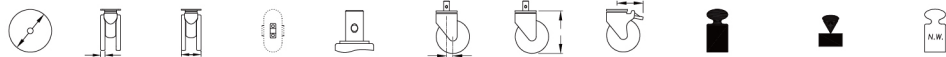
Unless requested otherwise, directional locking castor with threaded stem fitting should be installed with two shaved sides of the stem parallel to the direction of travel.

SPECIFICATION



R Round Stem Fitting

Glass fiber reinforced Nylon 6 for body and brake pedals. Precision ball bearings at swivel head and wheel axle. Non-marking, elastic thermoplastic polyurethane treads.



Total locking

Catis code	mm	mm	mm		Fitting	mm	mm	mm	kg	Shore A	kg
HT100BR8/G	100	14	67	●●	R8	30	122	108	80.0	85±5	0.54
HT100BR9/G	100	14	67	●●	R9	30	122	108	80.0	85±5	0.54
HT100BR63/G	100	14	67	●●	R63	30	122	108	80.0	85±5	0.54
HT125BR8/G	125	15	73	●●	R8	38	145	133	100.0	85±5	0.71
HT125BR9/G	125	15	73	●●	R9	38	145	133	100.0	85±5	0.71
HT125BR63/G	125	15	73	●●	R63	38	145	133	100.0	85±5	0.71

Directional locking

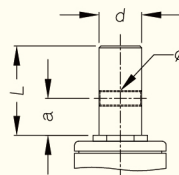
Catis code	mm	mm	mm		Fitting	mm	mm	mm	kg	Shore A	kg
HT100D1R8/G	100	14	67	●●	R8	30	122	108	80.0	85±5	0.54
HT100D1R9/G	100	14	67	●●	R9	30	122	108	80.0	85±5	0.54
HT100D1R63/G	100	14	67	●●	R63	30	122	108	80.0	85±5	0.54
HT125D1R8/G	125	15	73	●●	R8	38	145	133	100.0	85±5	0.71
HT125D1R9/G	125	15	73	●●	R9	38	145	133	100.0	85±5	0.71
HT125D1R63/G	125	15	73	●●	R63	38	145	133	100.0	85±5	0.71

Free swivel

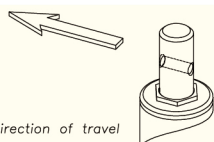
Catis code	mm	mm	mm		Fitting	mm	mm	mm	kg	Shore A	kg
HT100R8/G	100	14	67	●●	R8	30	122	86	80.0	85±5	0.48
HT100R9/G	100	14	67	●●	R9	30	122	86	80.0	85±5	0.48
HT100R63/G	100	14	67	●●	R63	30	122	86	80.0	85±5	0.48
HT125R8/G	125	15	73	●●	R8	38	145	106	100.0	85±5	0.63
HT125R9/G	125	15	73	●●	R9	38	145	106	100.0	85±5	0.63
HT125R63/G	125	15	73	●●	R63	38	145	106	100.0	85±5	0.63

- Durometer of tire
- Load Capacity as determined per EN12526 to EN12533, Load Capacity / Per Castor (kg)
- Precision ball bearing

Code	d	L	a	Ø
R8	22.0	45.0	19.0	M8×1.25
R9	28.0	45.0	19.0	M8×1.25
R63	18.0	28.0	19.0	M8×1.25



- Conductive wheels are also available. Add "-KAS" suffix to Catis code, e.g. HT100BR8/G-KAS
- Stainless steel castors are also available. Add "-SS" suffix to Catis code, e.g. HTE100BR8SS/G



Directional Locking Castor

Unless requested otherwise, directional locking castor with round stem fitting should be installed with retaining hole along the direction of travel.

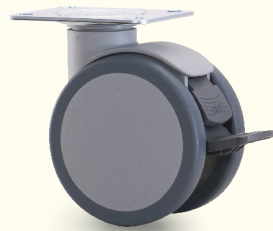
Note

Changes to listed specifications can be arranged to suit special requirements, such modifications largely depend on the size of orders.

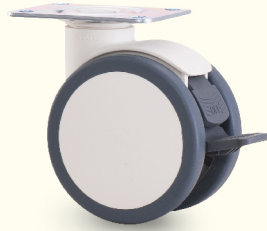
All specifications and dimensions are accurate for present production but subject to change without notice.

HT series come in two standard colors, Gray(RAL7001), and White(RAL9010).

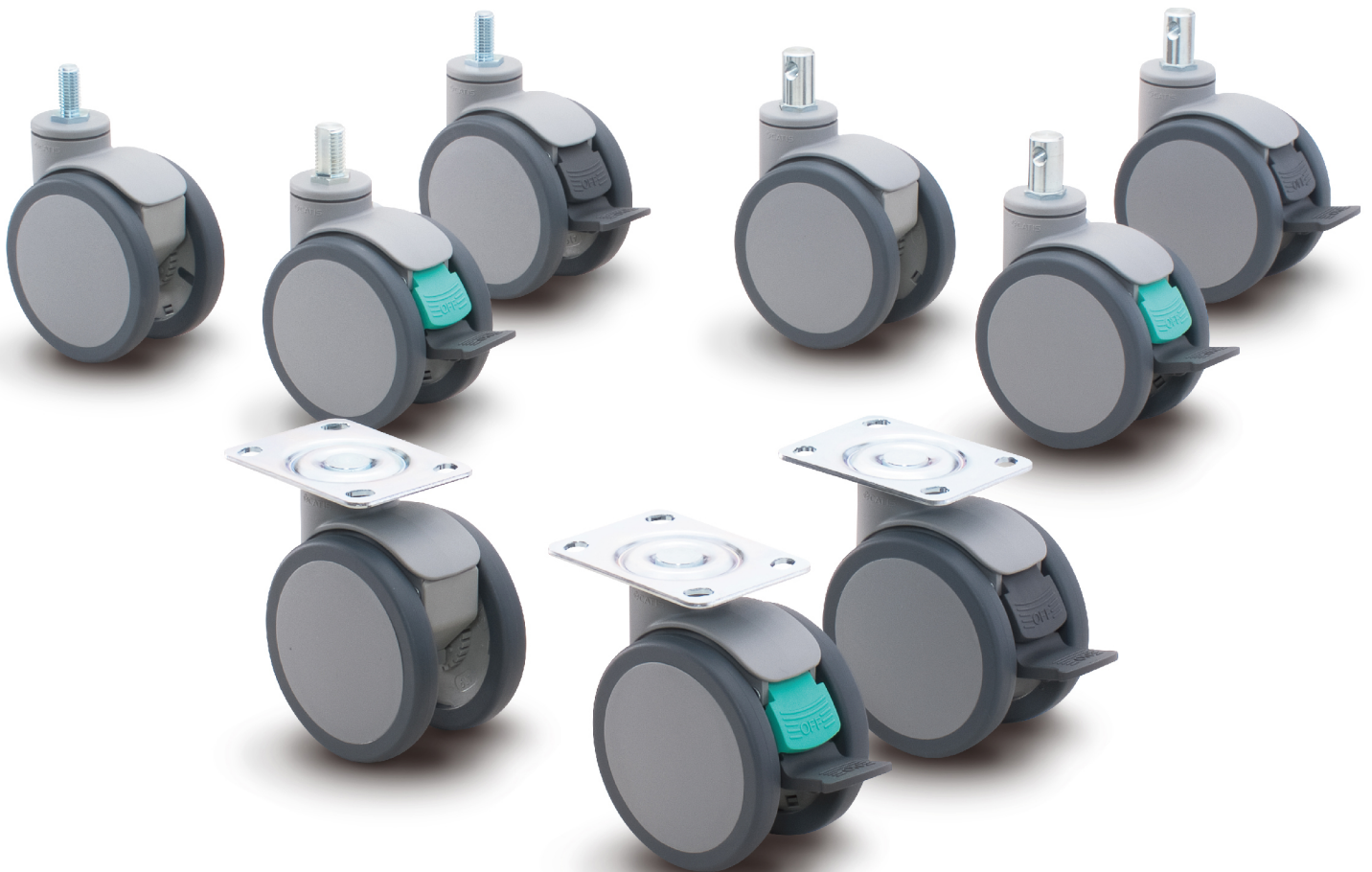
Serial numbers are listed for Gray color only; if White color is desired, please replace the last letter (color code) "G" with "W".



Gray Color



White Color



BetterSolutions



14F, No. 29-2, Sec. 2, Jungjeng E. Rd.,
Tamshui Dist., New Taipei City, Taiwan 251
Tel No.+886-2-8809-5011
Fax No.+886-2-8809-5015
E-mail : service@catis.com.tw
<http://www.catis.com>